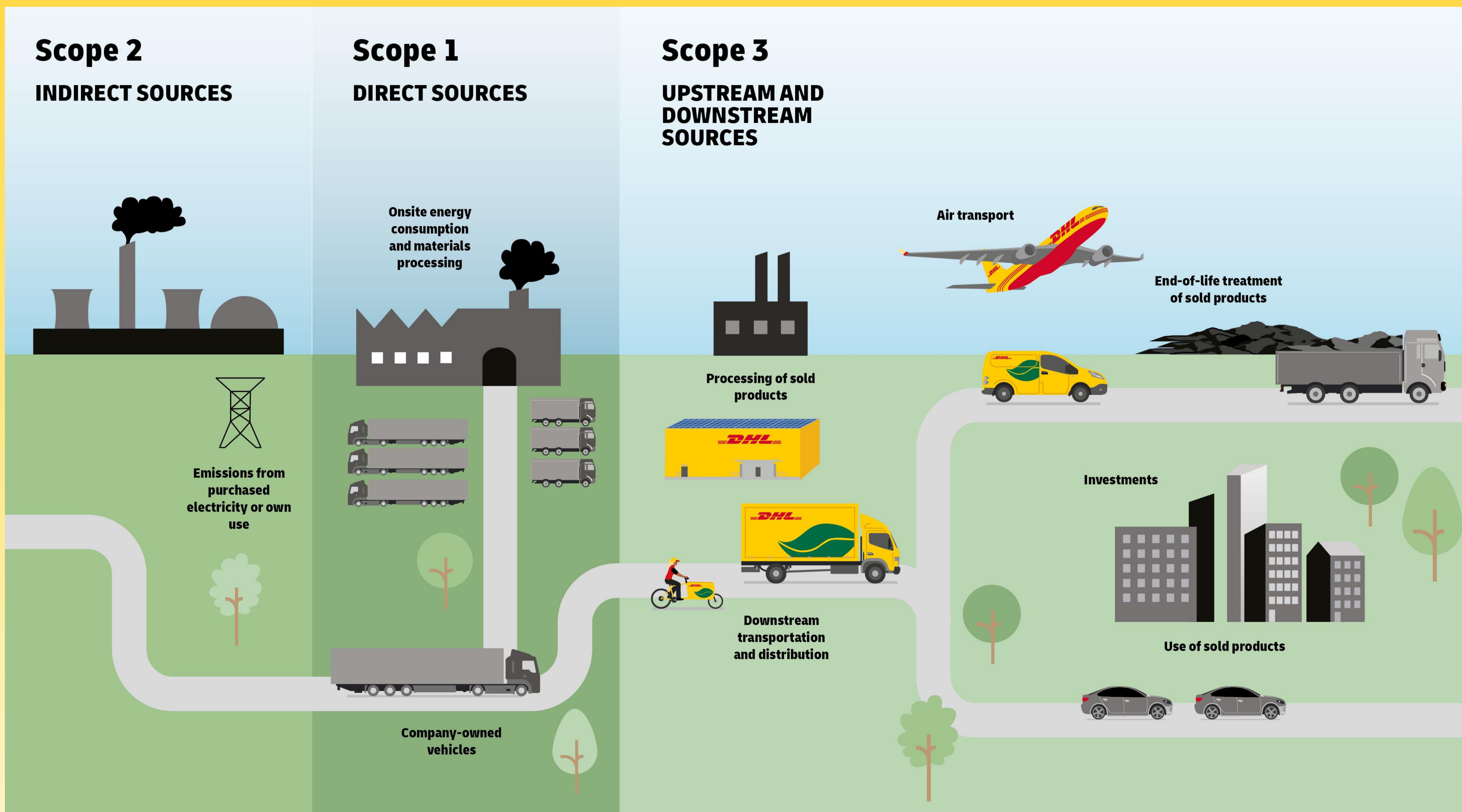




SCOPES AND EMISSIONS ACROSS THE VALUE CHAIN



DHL's logistics service supports the decarbonization of our customers' Scope 3 emissions.

The GHGP Corporate Standard classifies three Scopes - a company's emissions into

Scope 1 of the protocol cover the **direct emissions** a company produces through their own operations or sources they have control over.

Scope 2 covers the **indirect emissions** associated with the company from the generation of the electricity and heating energy they purchase and use.

Scope 3 includes all the other **indirect emissions that occur in a company's value chain** - including any up or downstream emissions from transportation and distribution.